



*For immediate release, March 24, 2020*

## City of Elgin Launches Mapping Resource Hub



### Hub provides community information on business and nonprofit offerings during Stay at Home Order

**Elgin, IL** - As part of the continued response to the coronavirus and its impacts to the community and economy, the City of Elgin released a new [interactive mapping hub](#) that supports local businesses and organizations, while providing consistent information for its residents.

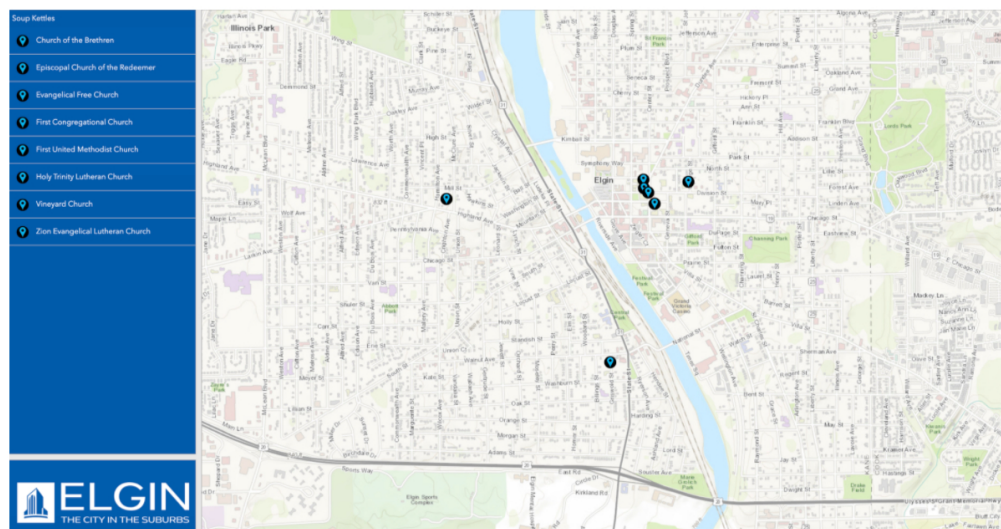
The mapping hub, built by the City of Elgin's Geographic Information Systems (GIS) team was compiled using information gathered by partner organizations including the Downtown Neighborhood Association of Elgin, the Elgin Area Chamber of Commerce, Explore Elgin Area Tourism Bureau and the Elgin Human Services Council.

"It's really nice for our team to be contributing to the City's efforts," said Rich Snyder, GIS Analyst for the City of Elgin. "We're helping people know where they can and can't go and what is still available from organizations that are physically closed but offering programs and services."

Snyder worked alongside ITS Network/GIS Manager Brendan Brooks and GIS

Specialist Chris Nawrot to create the mapping hub from scratch.

This new mapping hub provides a single place for people can find information on businesses and organizations that are being impacted by the coronavirus and the mandatory 'shelter in place' executive order.



Mapping Resource Hub categories include:

- Human Services
- School Food Distribution Centers
- Open Businesses, Places of Worship and Non-Profits
- Restaurants
- Temporarily Closed Locations

The Mapping Resource Hub can be viewed at [cityofelgin.org/mappingresource](http://cityofelgin.org/mappingresource).

Businesses and nonprofits can submit information regarding their operations at [cityofelgin.org/bizsurvey](http://cityofelgin.org/bizsurvey). Updates to the map will then be available almost immediately.

For more information, please contact [Molly Gillespie](#) at 847-931-5613.

[View Elgin's Coronavirus Mapping Resource Hub](#)

### Stay at Home Order

<b>DO</b>	<b>DON'T</b>
SHOP FOR GROCERIES + PICKUP PRESCRIPTIONS	BUY MORE THAN YOU NEED
GO TO THE BANK, POST OFFICE OR GAS STATION	VISIT A PLAYGROUND
WALK, RUN, RIDE YOUR BIKE, WALK YOUR DOG	GATHER IN GROUPS
PRACTICE SOCIAL DISTANCING	TRAVEL FOR NON-ESSENTIAL PURPOSES
ORDER FOOD FROM A RESTAURANT	GO TO THE GYM, SALON OR BARBER SHOP
CALL A PLUMBER OR ELECTRICIAN	



CITYOFELGIN.ORG/STAYATHOME

### ORDEN DE QUEDARSE EN CASA

<b>SI</b>	<b>NO</b>
VAYA AL SUPERMERCADO O FARMACIA	COMPRE MÁS DE LO QUE NECESITAS
VAYA AL BANCO, OFICINA DE CORREOS, O GASOLINERA	VISITE UN PARQUE INFANTIL
VAYA A CAMINAR, CORRER, MONTAR EN BICICLETA, Y A PASEAR SU PERRO	SE JUNTE EN GRUPOS
PRACTIQUE EL DISTANCIAMIENTO SOCIAL	VIAJE POR RAZONES NO ESENCIALES
ORDENE COMIDA DE RESTAURANTES	VAYA AL GIMNASIO, SALÓN DE BELLEZA O PELUQUERÍA
LLAME A UN PLOMERO O ELECTRICISTA	



CITYOFELGIN.ORG/STAYATHOME

Subscribe for future updates



**Watch for more news coming soon.**



---

*Copyright © \*2020 City of Elgin\*, All rights reserved.*

Want to change how you receive these emails?  
You can [update your preferences](#) or [unsubscribe from this list](#).