

October 17, 2021

[View this email in your browser](#)

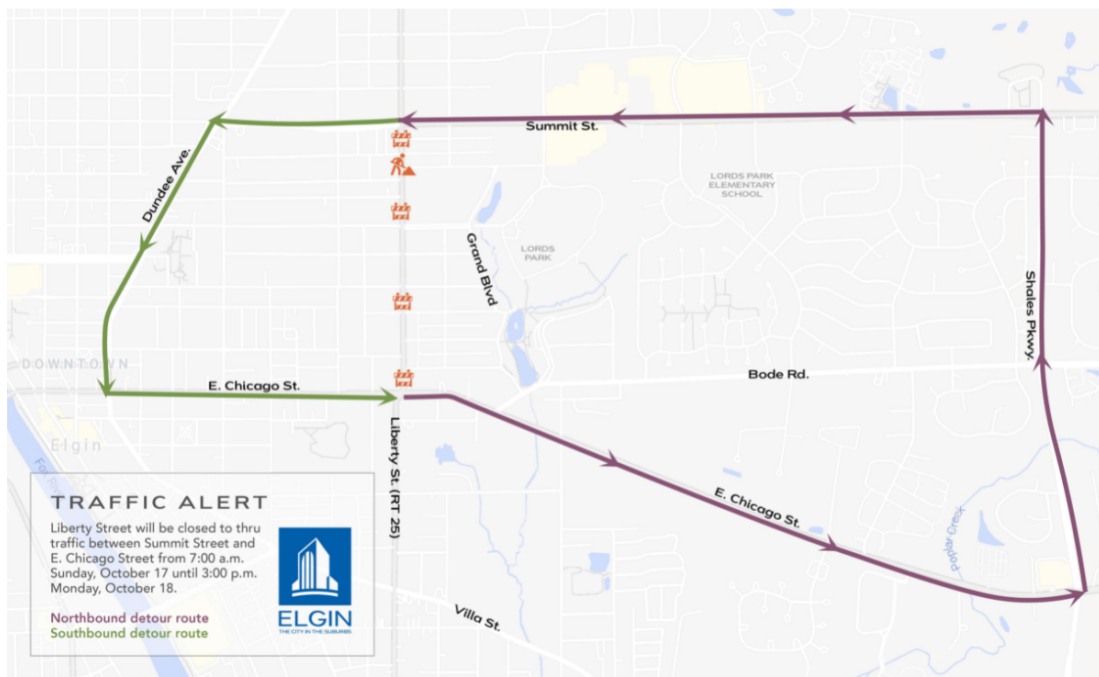
TRAFFIC ALERTS

Two closures on Liberty Street (Route 25) are planned this week. In addition, southbound traffic on Longcommon Parkway and McLean Boulevard continues to be impacted by construction. Plan alternative routes to avoid delays.

N. Liberty Street closed to thru traffic between Summit and E. Chicago October 17-18

Beginning Sunday, October 17 at 7:00 a.m., N. Liberty Street will be closed in both directions between Summit and E. Chicago to facilitate a water service repair and subsequent street repair on the 200 block of N. Liberty as well as tree trimming on the 300 block of N. Liberty. The road will be reopen to traffic by 3:00 p.m. Monday, October 18.

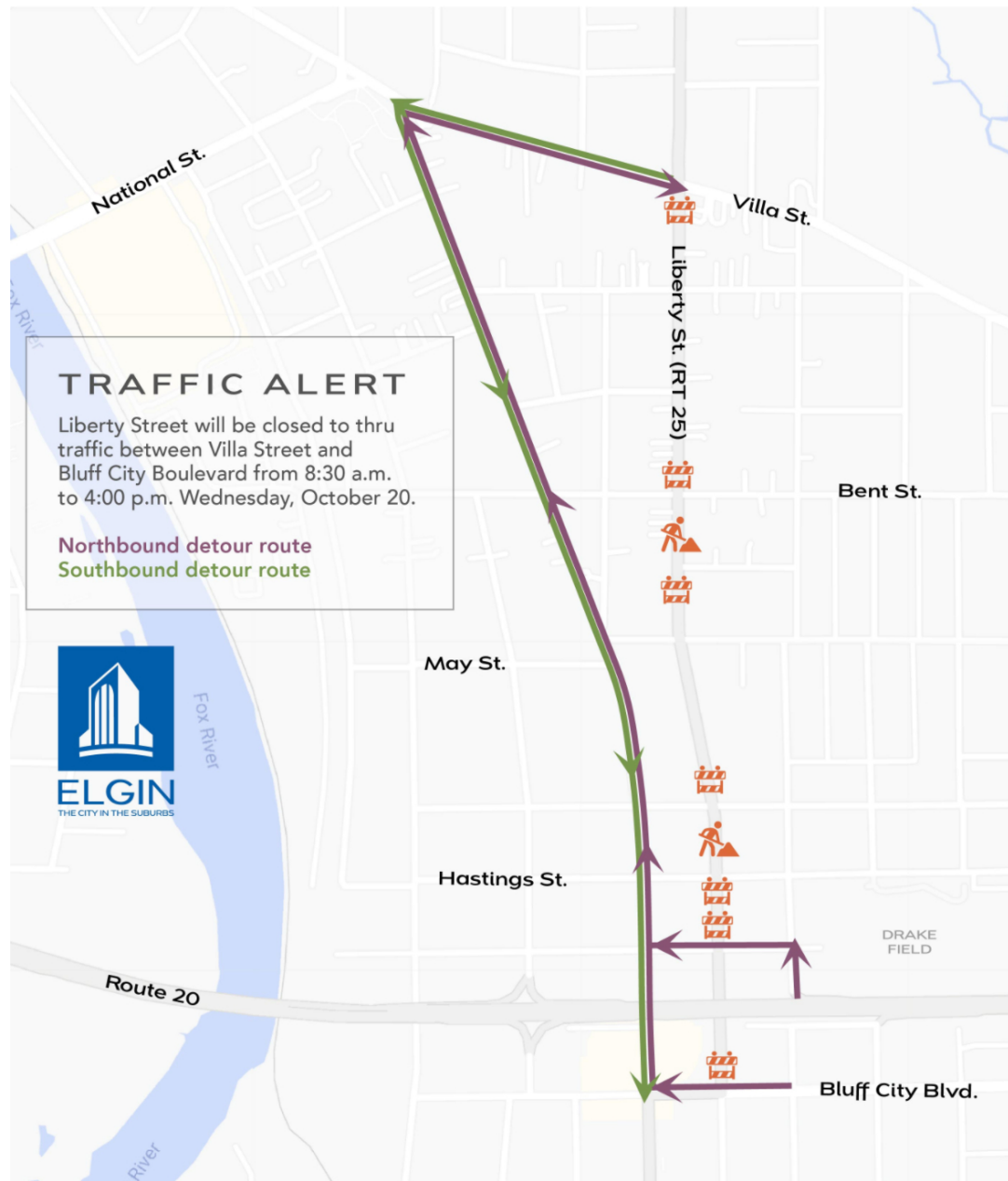
Posted detour routes will be in place to ensure safe travel around the work zone. During the closure, all local neighborhood traffic will be able to access some of the construction/work zone areas, but there will be no thru traffic allowed on N. Liberty between Summit Street and E. Chicago Street.



S. Liberty Street closed to thru traffic between Villa and Bluff City October 20

Beginning Wednesday, October 20 at 8:30 a.m., S. Liberty Street will be closed in both directions between Villa and Bluff City to facilitate tree trimming along the 500 and 600 block of S. Liberty. The road will be reopened to traffic by 4:00 p.m. There will not be any impact on Huff Elementary School for drop off or pickup.

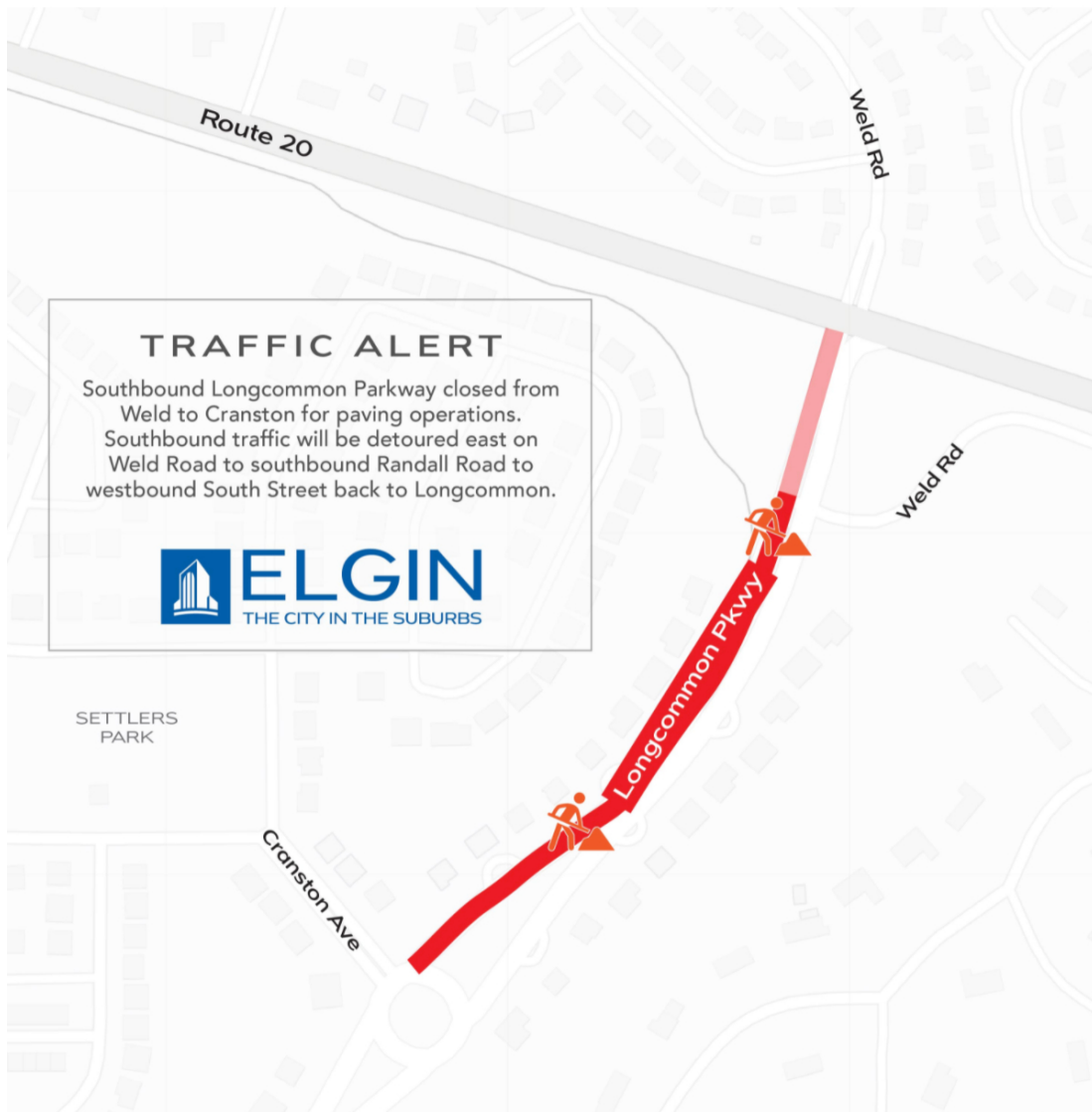
Posted detour routes will be in place to ensure safe travel around the work zone. During the closure, all local neighborhood traffic will be able to access some of the work zone areas, but there will be no thru traffic allowed on S. Liberty between Villa Street and Bluff City Boulevard.



City of Elgin's temporary closure of southbound Longcommon Parkway from Weld to Cranston

Weather delays have moved paving of Longcommon Parkway (from Route 20 to Cranston roundabout) to Monday, October 18. Southbound Longcommon traffic continues to be

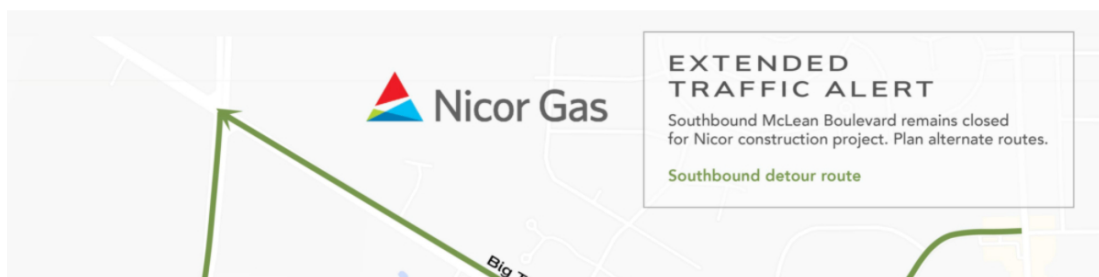
detoured on Weld to southbound Randall during construction hours (7:00 a.m. to 4:00 p.m.) with flaggers directing traffic.



Nicor's closure of Southbound McLean Boulevard

Nicor continues its construction work with directional boring from just north of Speedway under Big Timber to just south of the Metra tracks, adjacent to Multifilm. Southbound lanes will remain closed for the extent of this project. The closure is expected to last through at least through the end of the month, weather dependent. As work nears completion, an update will be provided.

Southbound traffic continues to be detoured west/south on Todd Farm, west on Big Timber, south on Randall, east on Royal back to McLean.





Find information on 2021 City of Elgin construction projects at cityofelgin.org/construction or by contacting 311 (847-931-6001 if outside Elgin). Follow [@ElginRoadAlerts](https://twitter.com/ElginRoadAlerts) on Twitter for regular project updates.



Copyright © 2021 City of Elgin, All rights reserved.

[unsubscribe from this list](#) [update subscription preferences](#)